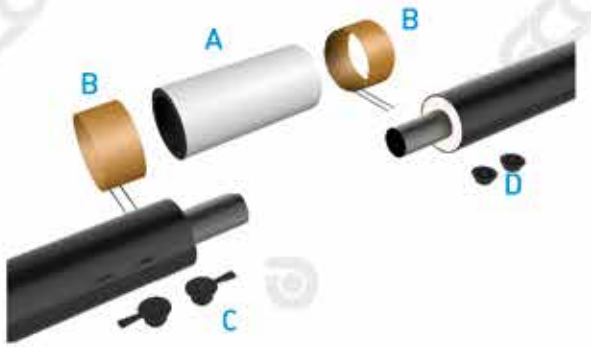


JOINT: ELECTRIC WELDED



- A) n. 1 polyethylene electric welding overcasing;
 B) n. 2 resistances and temperature sensors;
 C) n. 2 venting plugs;
 D) n. 2 welding plugs*;
- Polyurethane metered components for "in place" insulation;
 - Electric kit [wires, spacers, connectors, etc.] for the connection to the surveillance system, if required.

HDPE De [mm]	STD kit overcasing length [mm]
90	600
110	600
125	600
140	600
160	600
180	600
200	600
225	600
250	600
280	600
315	700
355	700
400	700
450	700
500	700
560	700
630	700
710	700
800	700
900	700
1000	700

WARNINGS: dimensions may be slightly modified due to the improvement of production standards. The tolerances are those required by the reference standards. If necessary, contact our TECHNICAL OFFICE for data confirmation.